



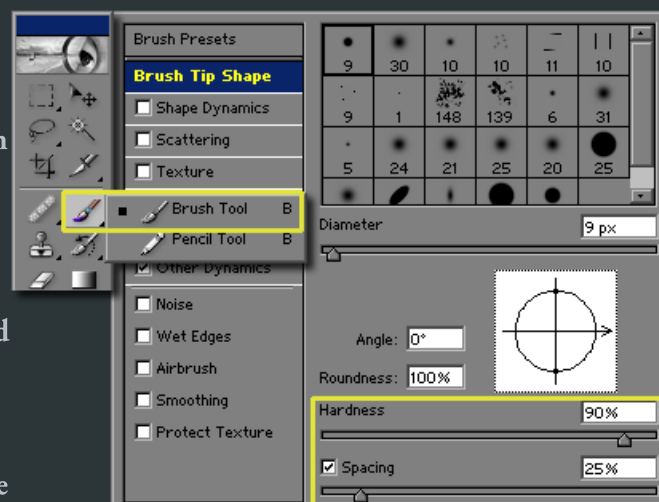
Software used: Photoshop 7
 Codecs used: Video - XviD; Audio - Lame MP3
 Length: 13:02

Low Poly Character Tutorial, General Delilah: Part 1, Concept

Standard photoshop paintbrush. Hokey = B. Click and hold over the **brush icon** to expand the menu like in the example image to the right. Alternatively you can hit B, then hit Shift+B to cycle to the next tool in the list. For the brush there is only two choices, so it works as a toggle between pencil and brush. **Opacity** and Flow are set to 100%



In the Brush presets, **Hardness** is set to 90%, **spacing** 25%. The only other brush preset is under "**Other dynamics**". There, **Flow** is set to be controlled by the **pen pressure** of the tablet input device (assuming their is one present).



Smudge tool. Hotkey = R. Click and hold over the **blur icon** to expand the menu like in the example image to the right. Alternatively you can hit R, then hit Shift+R to cycle to the next tool in the list. For the blur tool there are three choices, so it cycles between blur, sharpen and smudge. The brush presets for smudge are almost identical to the settings for the paintbrush, except that hardness has been lessened to 0% and Flow Jitter changes it's heading to "Strength" but is located in the same place and is still set to pen pressure.

Layer masks are used extensively and a tutorial can be found on mask usage at, <http://www.poopinmymouth.com/tutorial/masks.htm>.

Image adjustment options > Brightness/Contrast, Image Size, and Rotate Canvas > Flip Horizontal

Edit options > Free Transform

Filters > Add Noise

have more information available in the photoshop help file.

